

Unit	506	508	512	514	520	522	526	528
price	\$499k	\$579k	\$519k	\$589k	\$599k	\$539k	\$599k	\$529k
status	available	available	available	available	available	available	available	available
HOA's	\$280	\$280	\$280	\$280	\$280	\$280	\$280	\$280
sub total	1853 sf.	1992 sf.	1853 sf.	2040 sf.	2040 sf.	1853 sf.	1992 sf.	1853 sf.
total sf.	2340 sf.	2714 sf.	2354 sf.	2559 sf.	2559 sf.	2354 sf.	2714 sf.	2340 sf.

sacramento lofts™ is a high-end, sustainable community of eight modern homes that have the ambience of a progressive urban condo while maintaining the warmly inviting feeling of home.

Designed to promote community, yet welcome privacy, our condominiums exude warmth, innovation, and style. All eight homes are *four-stories high*, with 3 bedrooms & 3.5 bathrooms, and have **1850 to 2040** square feet of very usable space. Each home also has *beautiful* architectural details, *convenient* floor-plan layouts, and *unmatched* modern amenities, including:

- ▶ a rooftop garden
- ▶ personal garage
- ▶ radiant floor heating
- ▶ an eco-roof
- ▶ and a personal elevator

...to name a few.

All this and more, in a convenient area and beautiful neighborhood, makes it certain that you'll love calling one of the *Sacramento Lofts* your new home!





sacramento | lofts™

506

**NUMBER 506** is in the far Northwest corner of the lot and is one of the units that is closest to Sacramento Street (*making it ideal for anyone who works from home*). This unit has 1,853 square feet of indoor livable space, plus a sizable garage and roofdeck.

In addition to all the features & amenities that come in every *Sacramento Loft*, unit 506 also features a sizable balcony off the second floor that overlooks the front landscaping and Sacramento Street.

Each floor-plan is ergonomically designed for the way people live!

**1853 Total Square Feet**

- +211 Garage sf.
- +216 Roofdeck sf.

*See how this unit compares to all the others, and pricing on the comparison chart.*



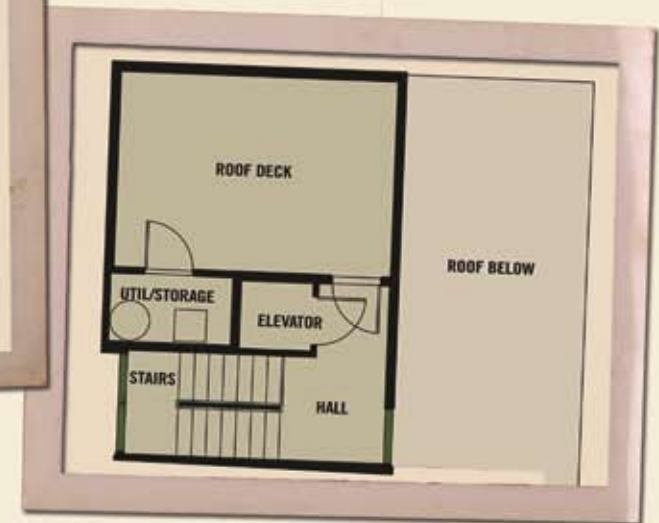
**First Floor** 447 sf. | Garage 211 sf.



**Second Floor** 644 sf. | Balcony



**Third Floor** 644 sf.



**Fourth Floor** 118 sf. | Roofdeck 216 sf.



sacramento lofts™

508

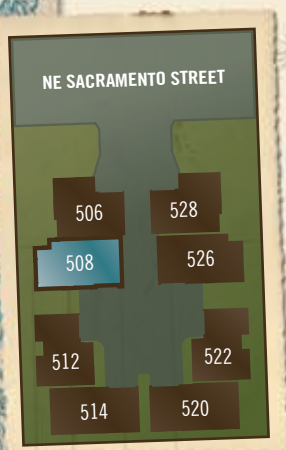
**NUMBER 508** is in the Northwest corner of the lot and has 1,992 square feet of indoor livable space, plus the largest personal garage and rooftop garden available. The rooftop garden (or roofdeck) is over 450 sf. making it perfect for those who are most excited about the rooftops!

Unit 508 also has a galley-style great room; with the kitchen, dining room, and living room completely open and connected. If you love to entertain, this is the home for you!

**1,992 Total Square Feet**

- +266 Garage sf.
- +456 Roofdeck sf.

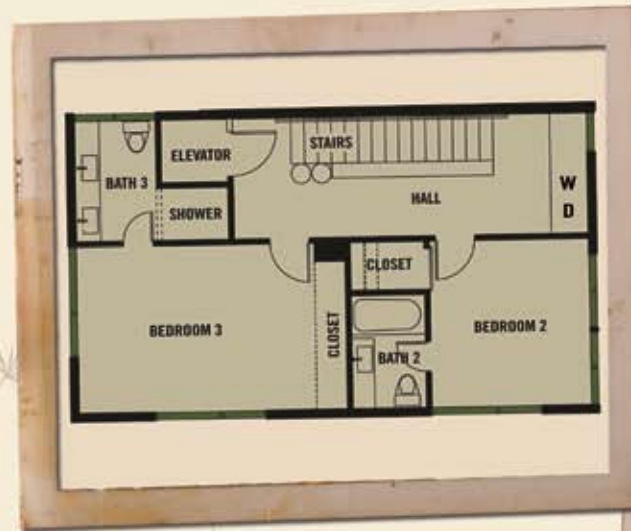
*See how this unit compares to all the others, and pricing on the comparison chart.*



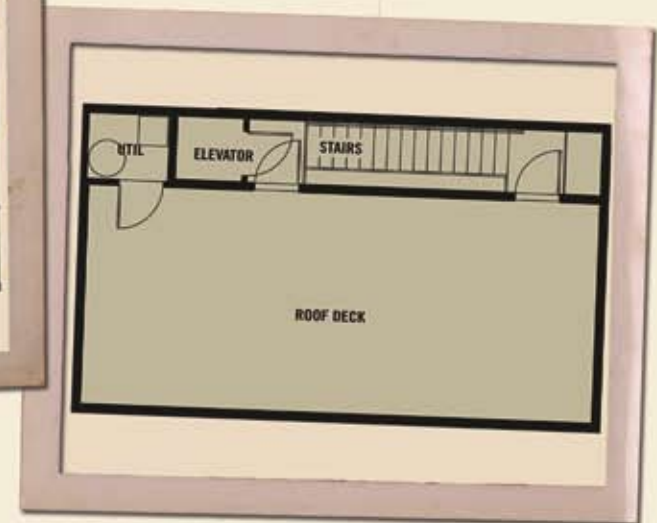
**First Floor** 458 sf. | Garage 266 sf.



**Second Floor** 722 sf.



**Third Floor** 722 sf.



**Fourth Floor** 90 sf. | Roofdeck 456 sf.



**512**

**NUMBER 512** is in the Southwest corner of the lot. This unit has 1,853 square feet of indoor livable space, plus a sizable garage and roofdeck.

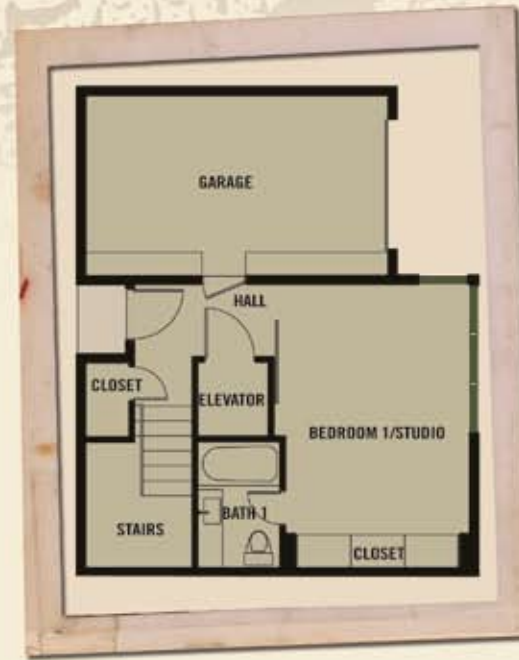
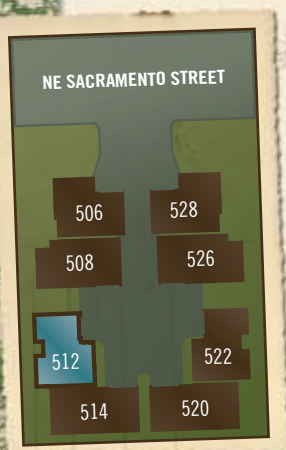
In addition to all the features & amenities that come in every *Sacramento Loft*, unit 512 also features a sizable balcony off the second floor that overlooks the center courtyard.

This home has an abundance of natural light and the layout would be great for a home office.

**1,853 Total Square Feet**

- +225 Garage sf.
- +216 Roofdeck sf.

*See how this unit compares to all the others, and pricing on the comparison chart.*



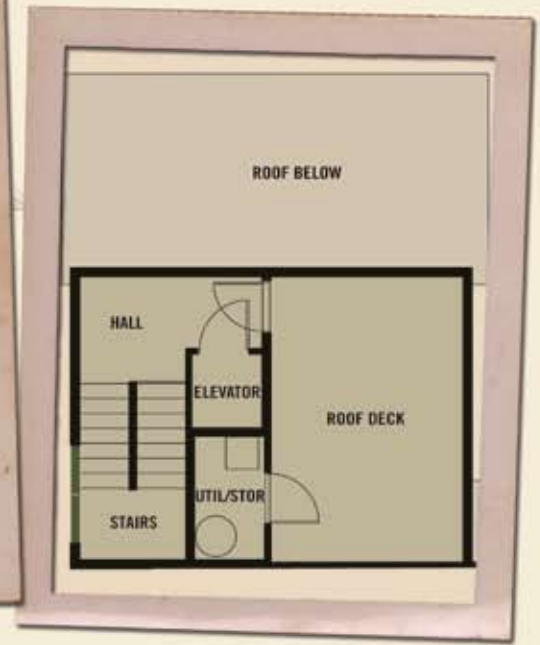
**First Floor** 434 sf. | Garage 225 sf.



**Second Floor** 654 sf. | Balcony



**Third Floor** 654 sf.



**Fourth Floor** 111 sf. | Roofdeck 216 sf.



sacramento lofts™

514

**NUMBER 514** is in the far Southwest corner of the lot and shares the title of "largest loft" with 2,040 square feet of livable space, plus the garage and roofdeck.

Unit 514 has a galley-style great room; with the kitchen, dining room, and living room completely open and connected.

This home also has great views of Downtown NE Portland from the rooftop and a large eco-roof.

**2,040 Total Square Feet**

- +244 Garage sf.
- +190 Roofdeck sf.

*See how this unit compares to all the others, and pricing on the comparison chart.*



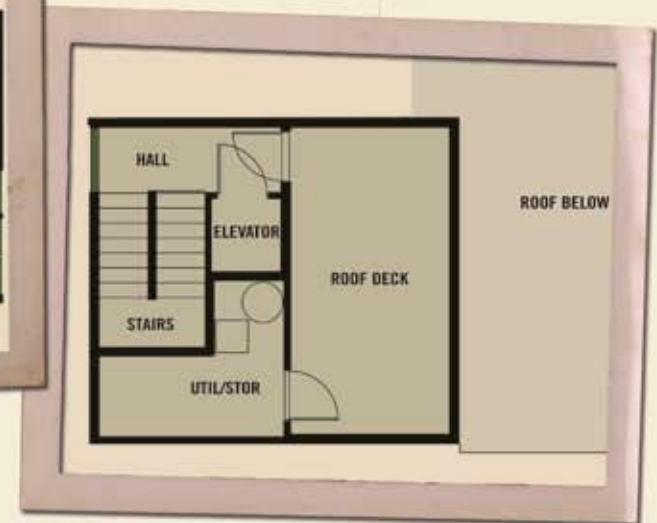
**First Floor** 482 sf. | Garage 244 sf.



**Second Floor** 705 sf.



**Third Floor** 705 sf.



**Fourth Floor** 148 sf. | Roofdeck 190 sf.



520

**NUMBER 520** is in the far Southwest corner of the lot and shares the title of "largest loft" with 2,040 square feet of livable space, plus the garage and roofdeck.

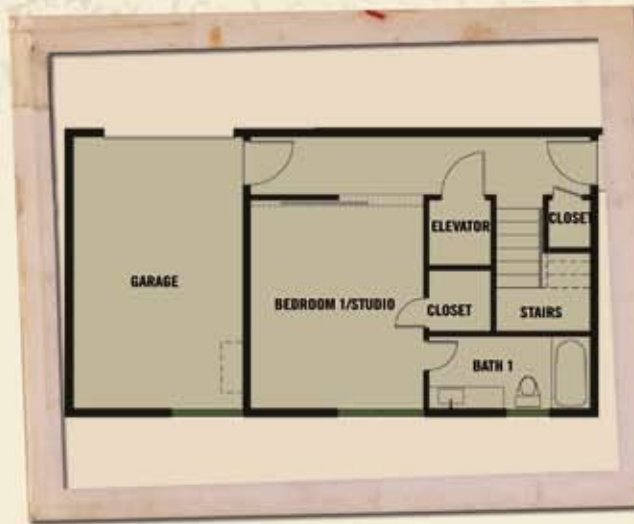
Unit 520 has a galley-style great room; with the kitchen, dining room, and living room completely open and connected.

This home also has a large eco-roof and great views of Downtown Portland from the rooftop.

**2,040 Total Square Feet**

- +244 Garage sf.
- +190 Roofdeck sf.

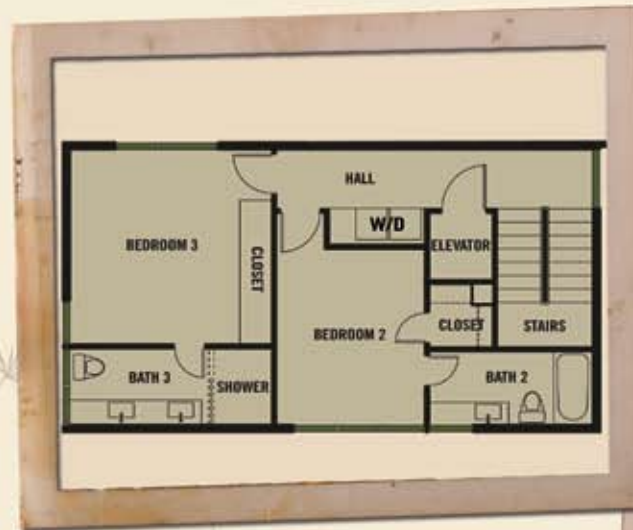
*See how this unit compares to all the others, and pricing on the comparison chart.*



**First Floor** 482 sf. | Garage 244 sf.



**Second Floor** 705 sf.



**Third Floor** 705 sf.



**Fourth Floor** 148 sf. | Roofdeck 190 sf.

522

**NUMBER 522** is in the Southeast corner of the lot. This unit has 1,853 square feet of indoor livable space, plus a sizable garage and roofdeck.

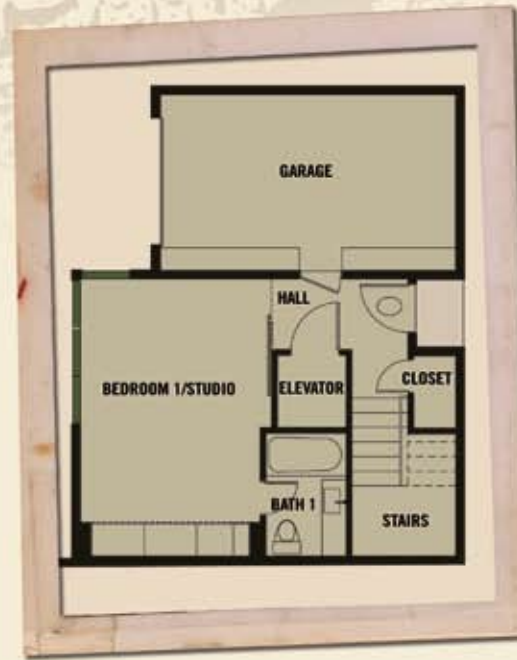
In addition to all the features & amenities that come in every *Sacramento Loft*, unit 522 also features a sizable balcony off the second floor that overlooks the center courtyard.

This home has an abundance of natural light and the 1st floor layout would be great for a home office.

**1,853 Total Square Feet**

- +225 Garage sf.
- +216 Roofdeck sf.

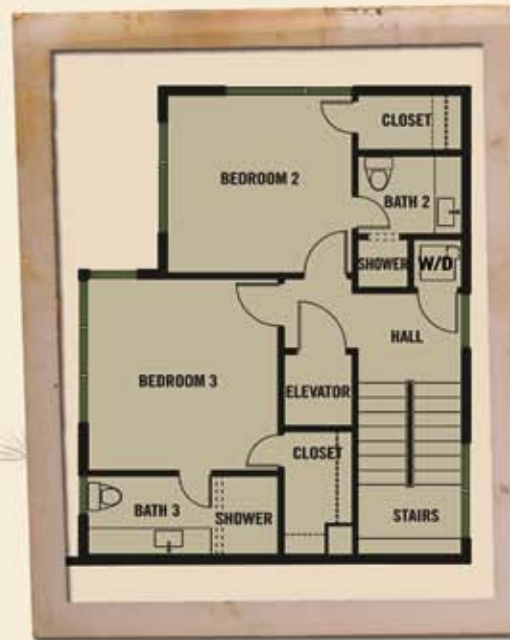
*See how this unit compares to all the others, and pricing on the comparison chart.*



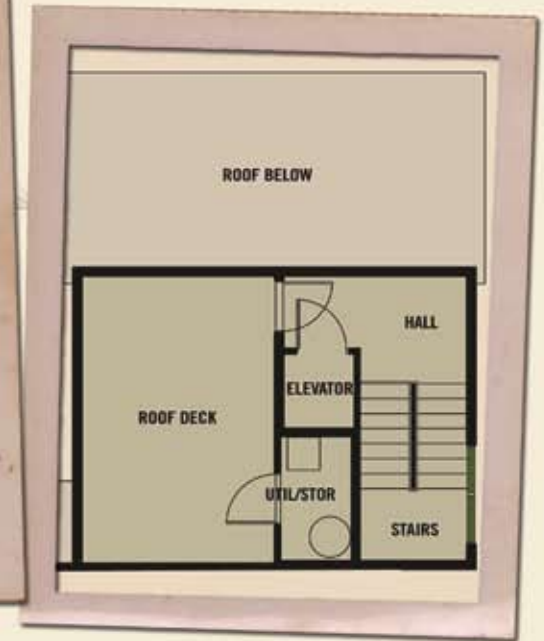
**First Floor** 434 sf. | Garage 225 sf.



**Second Floor** 654 sf. | Balcony



**Third Floor** 654 sf.



**Fourth Floor** 111 sf. | Roofdeck 216 sf.



**526**

**NUMBER 526** is in the Northeast corner of the lot and has 1,992 square feet of indoor livable space, plus the largest personal garage and rooftop garden available. The rooftop garden (or roofdeck) is over 450 sf. making it perfect for those who are most excited about the rooftops!

Unit 526 also has a galley-style great room; with the kitchen, dining room, and living room completely open and connected. If you love to entertain, this is the home for you!

**1,992 Total Square Feet**

- +266 Garage sf.
- +456 Roofdeck sf.

*See how this unit compares to all the others, and pricing on the comparison chart.*



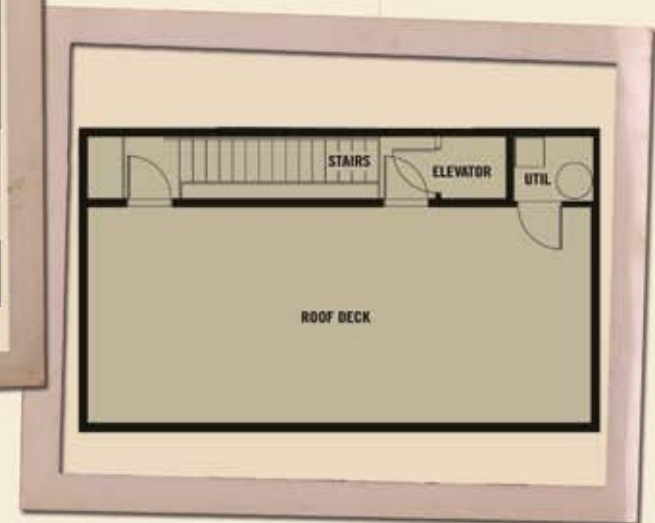
**First Floor** 458 sf. | Garage 266 sf.



**Second Floor** 722 sf.



**Third Floor** 722 sf.



**Fourth Floor** 90 sf. | Roofdeck 456 sf.



528

**NUMBER 528** is in the far Northeast corner of the lot and is one of the units that is closest to Sacramento Street (*making it ideal for anyone who works from home*). This unit has 1,853 square feet of indoor livable space, plus a sizable garage and roofdeck.

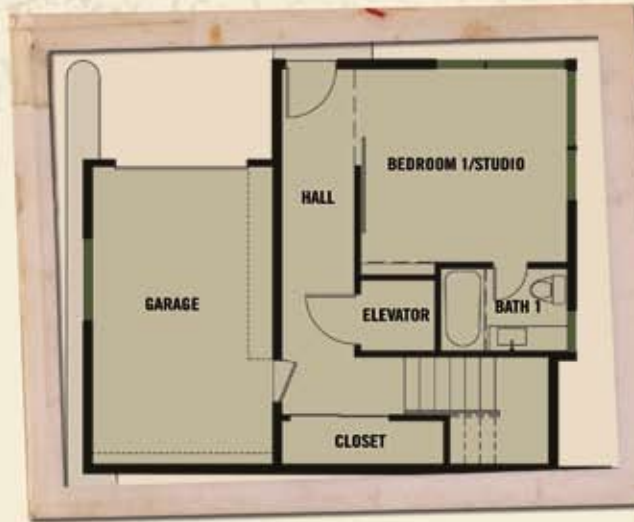
In addition to all the features & amenities that come in every *Sacramento Loft*, unit 528 also features a sizable balcony off the second floor that overlooks the front landscaping and Sacramento Street.

Each floor-plan is ergonomically designed for the way people live!

**1853 Total Square Feet**

- +211 Garage sf.
- +216 Roofdeck sf.

*See how this unit compares to all the others, and pricing on the comparison chart.*



**First Floor** 447 sf. | Garage 211 sf.



**Second Floor** 644 sf. | Balcony



**Third Floor** 644 sf.



**Fourth Floor** 118 sf. | Roofdeck 216 sf.



## Northeast Portland

Our condominium lofts are conveniently located in the heart of Northeast Portland (just six blocks North of Broadway and one block East of MLK). Urban living, historic homes, tree-lined streets, city parks, and street shopping typify this beautiful area of Portland. Easy access to public transportation, shops, restaurants, parks and only five minutes from the core of downtown Portland make the Sacramento Lofts a great place to live.

More maps at [SeeThisProject.com](http://SeeThisProject.com)

To see some of the great local amenities including shops & restaurants in the area go to [seethisproject.com](http://seethisproject.com) and select **Neighborhood**. You can also get directions from your area by selecting **directions** and then the Google maps link (or just call **503.282.1882** and we'll get you to it!)